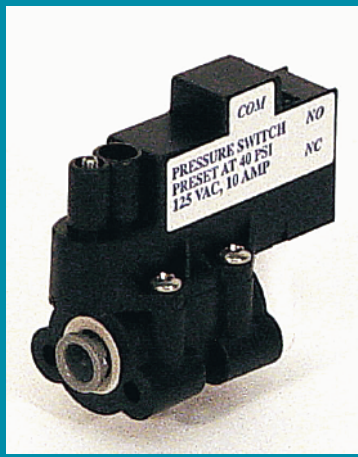


FLOW CONTROL COMPONENTS

PRESSURE AND VACUUM SWITCHES (PSW/VSW SERIES)

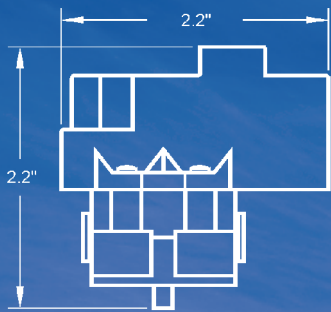
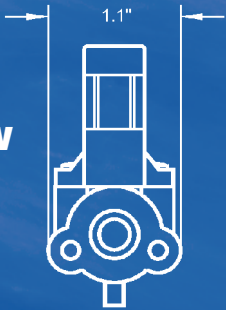


Our Pressure and Vacuum Switches (PSW and VSW Series) provide a full range of in-line pressure sensing electrical switches. These switches, typically mounted near a hydropneumatic holding tank, automatically control the system pump and/or solenoid valve as required. They can also be used to enable hydraulic shut-off valves to operate reliably and positively.

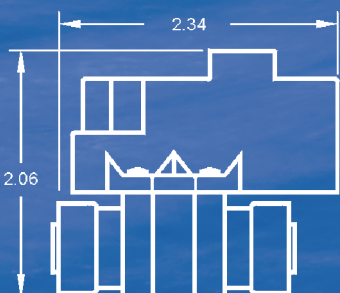
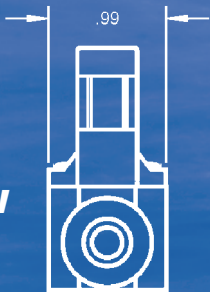
Aquatec's Pressure and Vacuum Switches are normally closed and can be pre-set at various shut-off pressures.

If necessary, they can be adapted to operate as normally open switches through minor modifications to the wire terminal connector. The PSW/VSW Series also includes a modular connector for plug-and-play integration with Aquatec's other system components.

PSW



VSW



- **NSF Approved**
- **Flow Through Design (i.e. no "Dead Legs")**
- **Switching Capabilities of 4-15 amps, 0-230 volts**
- **Single Pole, Double Throw**
- **Adjustable within 3-6 defined ranges (full vacuum to 150 psi)**

MODEL NUMBER	NOMINAL SETTING	RANGE ADJUSTMENT
VSW X10	10 inHg	0-30 inHg
PSW X20	20 psi	15-30 psi
PSW X40	40 psi	30-60 psi
PSW X60	60 psi	50-90 psi
PSW X80	80 psi	70-110 psi
PSW X100	100 psi	90-150 psi

TECHNICAL SPECIFICATIONS:

WETTED MATERIALS	Polypropylene, Santoprene, EPDM
SWITCH RATING:	250 VAC, 15 amp, UL listed
AVAILABLE SIZES (PSW):	1/4", 3/8", 5/16" (8mm) John Guest
AVAILABLE SIZE (VSW):	5/16" (8mm) John Guest
AVAILABLE SIZE (LPS):	1/4" NPT
ELECTRICAL CONNECTION:	AMP Mate-N-Lok