

Tomlinson Faucet Colors



White



Biscuit



Bright Nickel



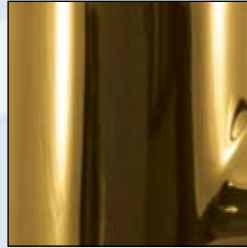
Polished Chrome



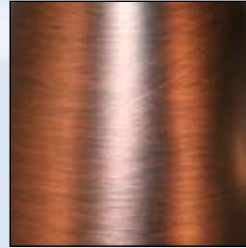
Satin Nickel



Brushed Stainless



Polished Brass



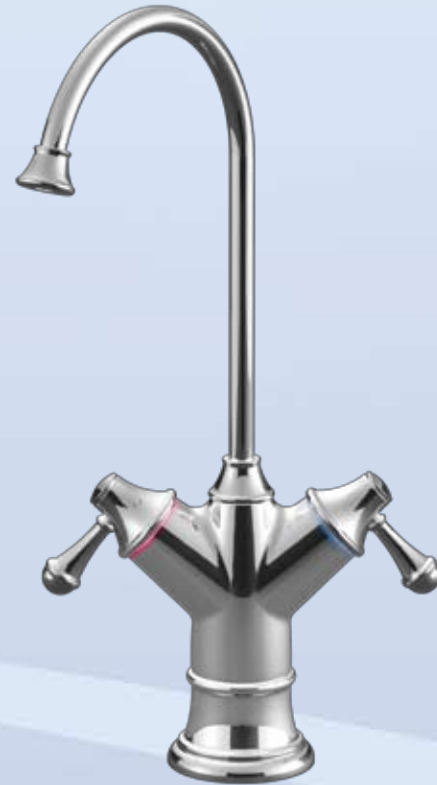
Antique Bronze



Black



Polished Chrome



Hot/Cold Faucet



LEAD FREE

Tomlinson Designer Faucets

3/6" of 1/4" OD feed tubing attached. Optional air gap adapter included. 3" Stud.

Item Number	Color
1019299	Polished Chrome
1019301	Satin Nickel
1019303	White
1019305	Biscuit
1019307	Black
1019309	Polished Brass
1019311	Antique Bronze
1019444	Bright Nickel
1020518	Brushed Stainless

Mounting hole size with air gap: 7/8" - 1.125" Without air gap: 1/2" - 1.125"

*Hot/Cold faucets do not include an air-gap and are not compatible with InSinkErator Products.

LEAD FREE

Tomlinson Dual Designer Faucets

3/6" of 1/4" OD feed tubing attached. Optional air gap adapter included. 3" Stud.

Item Number	Color
1020899*	Hot/Cold Faucet - Satin Nickel, Non-air-gap
1020900*	Hot/Cold Faucet - Antique Bronze, Non-air-gap
1020905*	Hot/Cold Faucet - Brushed Stainless, Non-air-gap
1022305*	Hot/Cold Faucet - Polished Chrome, Non-air-gap

Mounting hole size with air gap: 7/8" - 1.125" Without air gap: 1/2" - 1.125"

*Hot/Cold faucets do not include an air-gap and are not compatible with InSinkErator Products.

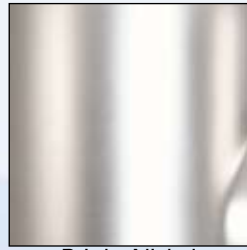
Tomlinson Faucet Colors



White



Biscuit



Bright Nickel



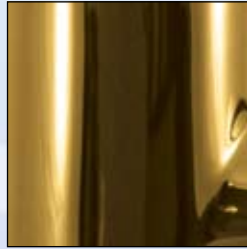
Polished Chrome



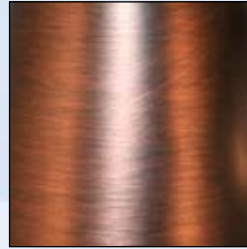
Satin Nickel



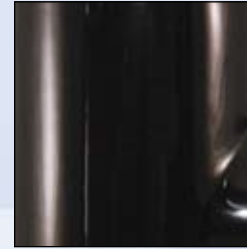
Brushed Stainless



Polished Brass



Antique Bronze



Black



Polished Chrome



LEAD FREE

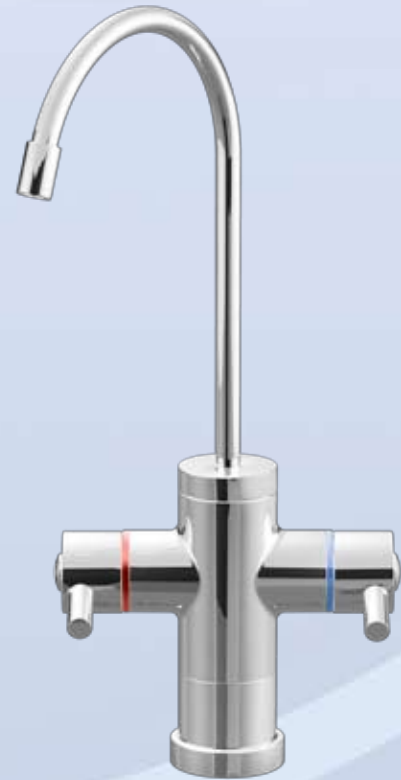
Tomlinson Contemporary Faucets

36" of 1/4" OD feed tubing attached. Optional air gap adapter included. 3" Stud.

Item Number	Color
1020587	Polished Chrome
1020889	Satin Nickel
1020891	Antique Bronze
1020892	Bright Nickel
1020893	White
1020894	Black
1020895	Polished Brass
1020896	Brushed Stainless
1020897	Biscuit

Mounting hole size with air gap: 7/8" - 1.125" Without air gap: 1/2" - 1.125"

* Hot/Cold faucets do not include an air-gap and are not compatible with InSinkErator Products.



Hot/Cold Faucet



LEAD FREE

Tomlinson Dual Contemporary Faucets

36" of 1/4" OD feed tubing attached. Optional air gap adapter included. 3" Stud.

Item Number	Color
1022118*	Hot/Cold Faucet - Polished Chrome, Non-air-gap
1020890*	Hot/Cold Faucet - Satin Nickel, Non-air-gap
1020912*	Hot/Cold Faucet - Brushed Stainless, Non-air-gap

Mounting hole size with air gap: 7/8" - 1.125" Without air gap: 1/2" - 1.125"

* Hot/Cold faucets do not include an air-gap and are not compatible with InSinkErator Products.

Tomlinson Valueline Faucet Colors



Polished Chrome



Satin Nickel



603 Series

713 Series

888 Series

802 Series

905 Series

LEAD FREE



Tomlinson Valueline Faucets

36" of 1/4" OD feed tubing attached. 3" Stud.

Item Number	Series	Type	Color
1022280	603	Non-Air-Gap	Polished Chrome
1022282	603	Non-Air-Gap	Satin Nickel
1022286	888	Non-Air-Gap	Polished Chrome
1022288	888	Non-Air-Gap	Satin Nickel
1022292	905	Non-Air-Gap	Polished Chrome
1022294	905	Non-Air-Gap	Satin Nickel
1022298	713	Non-Air-Gap	Polished Chrome
1022300	713	Non-Air-Gap	Satin Nickel
1022387	802	Non-Air-Gap	Polished Chrome

Faucets require mounting hole size of 1/2" - 1.125".

LEAD FREE



Tomlinson Valueline Faucets - Air Gap

36" of 1/4" OD feed tubing attached. 3" Stud.

Item Number	Series	Type	Color
1022281	603	Air-Gap	Polished Chrome
1022283	603	Air-Gap	Satin Nickel
1022287	888	Air-Gap	Polished Chrome
1022289	888	Air-Gap	Satin Nickel
1022293	905	Air-Gap	Polished Chrome
1022295	905	Air-Gap	Satin Nickel
1022299	713	Air-Gap	Polished Chrome
1022301	713	Air-Gap	Satin Nickel
1022386	802	Air-Gap	Polished Chrome

Faucets require mounting hole size of 7/8" - 1.125".

Li Kuan Faucet Colors



White



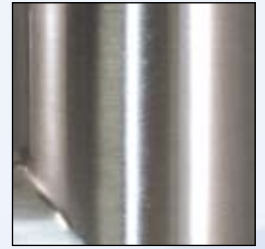
Almond



Chrome



Flat Chrome



Brushed Nickel



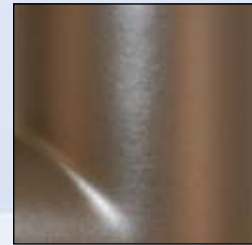
Gold Plated



Antique Wine



Antique Brass



Oil Rubbed Bronze



Chrome



Chrome

LEAD FREE



LEAD FREE



Li Kuan Lead Free Faucets - 888 Series

Item Number	Series	Type	Color
NCP8883CP	888	Non-Air-Gap	Chrome
NCP8883NP	888	Non-Air-Gap	Brushed Nickel
NCP8883ST	888	Non-Air-Gap	Flat Chrome
NCP8883AB	888	Non-Air-Gap	Antique Brass
NCP8883AW	888	Non-Air-Gap	Antique Wine
NCP8883OB	888	Non-Air-Gap	Oil Rubbed Bronze

Non-Air Gap Faucets require mounting hole size of 7/16" - 1.5"
Air Gap Faucets require mounting hole size of 7/8" - 1.5"

Li Kuan Lead Free Faucets - 103 Series

Item Number	Series	Type	Color
N1033CP	103	Non-Air-Gap	Chrome
N1033NP	103	Non-Air-Gap	Brushed Nickel
N1033G	103	Non-Air-Gap	Gold Plated
N1033WT	103	Non-Air-Gap	White
N1033AL	103	Non-Air-Gap	Almond
N103AG3CP	103	Air-Gap	Chrome
N103AG3NP	103	Air-Gap	Brushed Nickel

Non-Air Gap Faucets require mounting hole size of 7/16" - 1.5"
Air Gap Faucets require mounting hole size of 7/8" - 1.5"

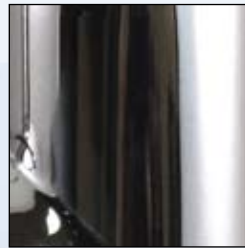
Li Kuan Faucet Colors



White



Almond



Chrome



Flat Chrome



Brushed Nickel



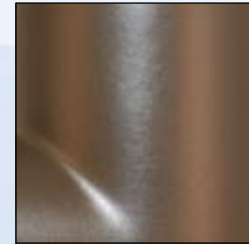
Gold Plated



Antique Wine



Antique Brass



Oil Rubbed Bronze



304 Series

703 Series

905 Series

603 Series



NKD0112CP

NKD0212CP

LEAD FREE



Li Kuan Lead Free Faucets

Item Number	Series	Type	Color
N304CPW	304	Non-Air-Gap	Chrome (White Tip)
N304CPB	304	Non-Air-Gap	Chrome (Black Tip)
NCP7033CP	703	Non-Air-Gap	Chrome
NCP7033NP	703	Non-Air-Gap	Brushed Nickel
NCP7033OB	703	Non-Air-Gap	Oil Rubbed Bronze
NCP6033CP	603	Non-Air-Gap	Chrome
NCP9053CP	905	Non-Air-Gap	Chrome
NCP9053NP	905	Non-Air-Gap	Brushed Nickel
NWDF-			Faucet Hardware Kit - with
HK14W			escutcheon cover plate
0-3SP2			Faucet Repair Kit - Poppet
			Assem, Black Handle, Tip

Non-Air Gap Faucets require mounting hole size of 7/16" - 1.5"
Air Gap Faucets require mounting hole size of 7/8" - 1.5"

Li Kuan Tri-Flow (Hot/Cold/Filtered) Faucets

Item Number	Description
NKD0112CP	Straight - Chrome, 3" stud
NKD0212CP	Cross - Chrome, 3.5" stud
Recommended 1.375" mounting hole size.	

QMP Faucet Colors



Chrome



LEAD FREE*

QMP Long Reach Non-Air Gap Faucets

Item Number	Color
QMP102	Chrome
QMP102WP	Chrome - White Handle and Tip
QMP102D	Chrome - Dual Flow Faucet
QMP102C/AB	Antique Brass
QMP102C/AL	Almond
QMP102C/BC	Brushed Chrome
QMP102C/BIS	Biscuit
QMP102C/BL	Black
QMP102C/BF	Flat Black
QMP102C/BN	Brushed Nickel
QMP102C/BS	Brushed Stainless
QMP102C/ORB	Oil Rubbed Bronze
QMP102C/VB	Venetian Bronze
QMP102C/PB	Polished Brass
QMP102C/PEW	Pewter
QMP102C/PN	Polished Nickel
QMP102C/SN	Satin Nickel
QMP102W	White
QMP902/C/BS	Stainless Steel Faucet w/Brushed Finish - Dome Base

Faucets require mounting hole size of 7/16" - 1.5"

QMP Long Reach Air Gap Faucets

Item Number	Color
QMP102AG	Chrome
QMP102AG/C/AB	Antique Brass
QMP102AG/C/BC	Brushed Chrome
QMP102AG/C/BIS	Biscuit
QMP102AG/C/BL	Black
QMP102AG/C/BN	Brushed Nickel
QMP102AG/C/BS	Brushed Stainless
QMP102AG/C/ORB	Oil Rubbed Bronze
QMP102AG/C/PB	Polished Brass
QMP102AG/C/PEW	Pewter
QMP102AG/C/SN	Satin Nickel
QMP102AG/C/VB	Venetian Bronze
QMP102AG/C/W	White
QMP902AG/BS/38	Stainless Steel Faucet w/Brushed Finish - Dome Base

Faucets require mounting hole size of 7/8" - 1.5"



LEAD FREE*

QMP Short Spout Faucets

Item Number	Color
QMP100	Chrome
QMP100C/BN	Brushed Nickel
QMP100C/PB	Polished Brass
QMP100W	White

Faucets require mounting hole size of 7/16" - 1.5"



LEAD FREE*

QMP Ceramic Disk Faucets

Item Number	Color
QMP804	Chrome
QMP804/AL	Almond
QMP804/BF	Flat Black
QMP804/BL	Black
QMP804/BN	Brushed Nickel
QMP804/BSS	Brushed Stainless Steel
QMP804/ORB	Oil Rubbed Bronze
QMP804/SN	Satin Nickel
QMP804/VB	Venetian Bronze
QMP804/W	White
QMP804AG	Chrome - Air Gap
QMP804AG/ORB	Oil Rubbed Bronze - Air Gap
QMP804AG/SN	Satin Nickel - Air Gap

Non-air gap faucets require mounting hole size of 7/16" - 1.5"
Air gap faucets require a mounting hole size of 7/8" - 1.5"

Faucet Accessories

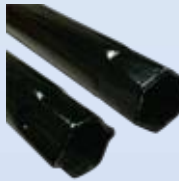


QMP Faucet Accessories

Item Number	Description
QMP100/EXT	6" Faucet Extension
QMP519	Faucet Repair Kit-Spring Poppet Assembly, Black Handle, Tip
QMP522	Faucet Washer Kit with escutcheon cover plate
QMP532C	Air Gap Faucet Kit with escutcheon cover plate
QMPHC20	Faucet Hole Cover, 2" Diameter

Tomlinson Faucet Displays

Item Number	Description
1020466	Tomlinson Faucet Color Kit
1023029	Designer Faucet Display with Color Kit
1023030	Contemporary Faucet Display with Color Kit



Li Kuan Faucet Finish Color Ring Display

Item Number	Description
NWDF-RING	Li Kuan Faucet Finish Color Ring Display

Faucet Installation Wrench

Item Number	Description
NWDF-WRENCH	Long wrench for tightening compression and lock nuts