

DLA-GTM Multipurpose Airgap DRAIN LINE ADAPTER

The DLA-G multipurpose standpipe airgap is designed for residential and commercial water softeners and RO's.



- Connects softener and RO drains to all material Sch.-40 standpipes
- Uses standard plumbing fittings to meet code requirements nationwide
- Removable and reusable for rentals and temporary installations
- Positive connection ensures a safe and professional installation
- Convenient selection of push-in/quick connect, Jaco and barb sizes
- Comes in kit form with instructions and fittings needed for installation
- Splash and mist free under 15 gpm
- 2 vertical inches of airgap
- Fast easy installation
- IAPMO/UPC & IPC Listed
- ASME A112.1.3

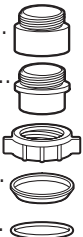
PATENTED



MADE IN USA

LIST OF PARTS ENCLOSED

- 1 — Drain Line Adapter with Push-In, Compression or Barb Connection (DLA-G)...
- 1 — 1 1/2" Schedule-40 (Hub x Male Pipe Thread) Trap Adapter.....
- 1 — 1 1/2" Schedule-40 (Spigot x Male Pipe Thread) Trap Adapter.....
- 1 — 1 1/2" Slip Joint (S.J.) Wing Nut.....
- 1 — 1 1/2" Slip Joint (S.J.) Beveled Washer.....
- 1 — 1 1/2" Nitrile O-Ring (for alternate use instead of washer).....

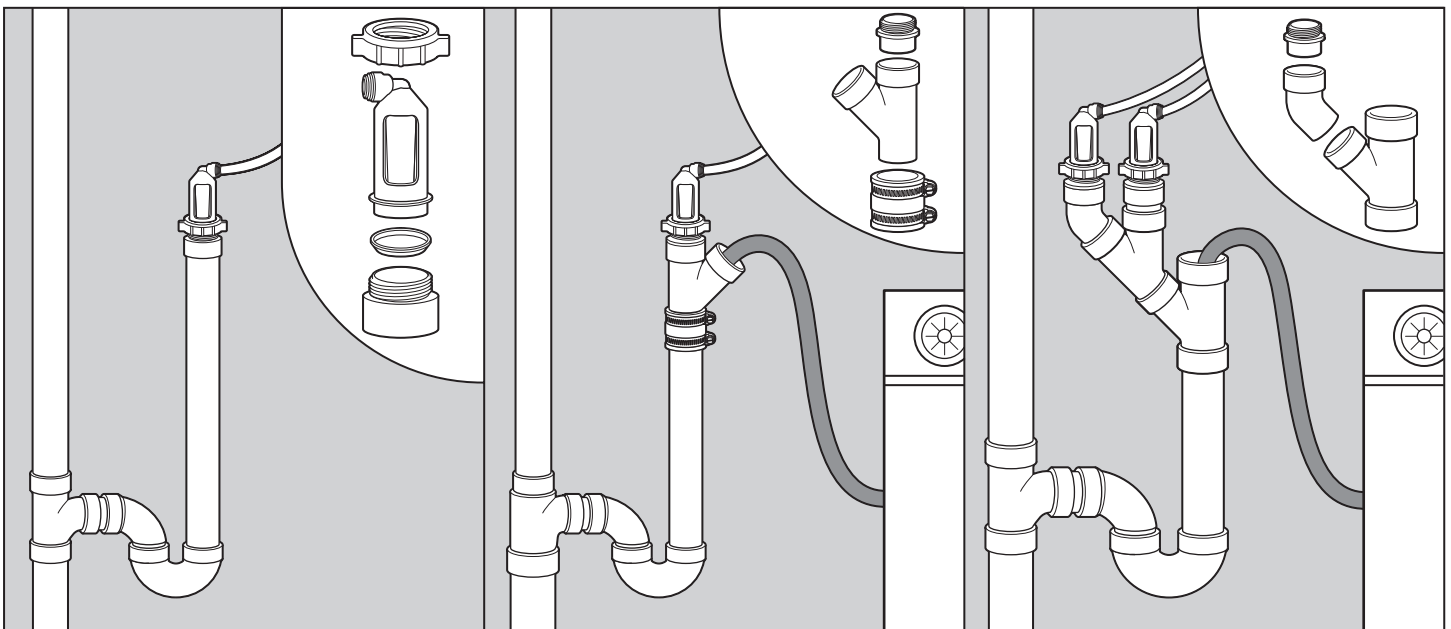


The Eco-Tech DLA-G

Drain Line Adapter provides a true airgap for all Schedule-40 DWV standpipes.

Installation time is typically 1 to 3 minutes. (Instructions are included in package)

Here are three practical standpipe configurations:



Combination water softener / RO / washing machine drain configurations