

Rentals/Temporary and Permanent Installation Tips:

By using a 1 1/2" spigot trap adapter and no-hub coupling, the DLA-G may be removed and the standpipe left in its original condition. You can unscrew the DLA-G to check flow rates, or install at a new location even if a trap adapter or wye and trap adapter combination is permanently glued to the standpipe.

The two trap adapters provided with your DLA-G will allow you to make a connection to any standpipe configuration encountered: use the close 1 1/2" MIPT nipple in a threaded female fitting, the spigot adapter in a female slip fitting, and a hub adapter over ABS/PVC pipe. The beveled washer and O-ring are interchangeable, but should not be used together.

No-Hub connectors: Ideal for cast iron or non-threaded galvanized steel, copper, and ABS/PVC pipe. With the use of no-hub couplings, it is a simple procedure to splice into any drain line to fabricate a standpipe.

Note: In most residential applications, it is permissible to transition from metal to plastic using no-hub couplings, however some commercial buildings require a uniformity of material throughout the drainage system such as all no-hub cast iron pipe. For this reason, it is advisable to determine the specific code requirements for each job.

List of materials useful to have on hand:

(These materials are inexpensive, easy to find, and take up very little space.)

2" No-Hub Coupling	2" ABS/PVC Combination Tee
2" x 1 1/2" No-Hub Coupling	2" x 1 1/2" ABS/PVC Combination Tee
1 1/2" No-Hub Coupling	1 1/2" ABS/PVC Combination Tee
2" ABS/PVC Wye (Hub or Street)	2" ABS/PVC Sanitary Tee
2" x 1 1/2" ABS/PVC Wye (Hub or Street)	2" x 1 1/2" ABS/PVC Sanitary Tee
1 1/2" ABS/PVC Wye (Hub or Street)	1 1/2" ABS/PVC Sanitary Tee
2" ABS/PVC P-Trap	2" ABS/PVC Sch-40 Pipe (5'-10')
1 1/2" ABS/PVC P-Trap	1 1/2" ABS/PVC Sch-40 Pipe (5'-10')
2" x 1 1/2" ABS/PVC Reducer Coupling	ABS Glue
2" x 1 1/2" ABS/PVC Flush Bushing	PVC Primer & Glue
1 1/2" ABS/PVC Street 45 (1/8 Bend)	1" Teflon Tape or Pipe Joint Compound

Tools useful to have on hand:

- Sawzall, Pipe/Tube Cutter or Hacksaw
- Channel Lock or Pipe Wrench
- No-Hub Wrench or Straight Screw Driver
- Tape Measure

Serving the
Water Treatment
& Plumbing Industry



ECO-TECH, INC.™

Model DLA-G™

Pat. No. 5,449,456
Pat. No. 5,681,459
Pat. No. 5,944,985
Pat. No. 6,193,879

MADE IN USA

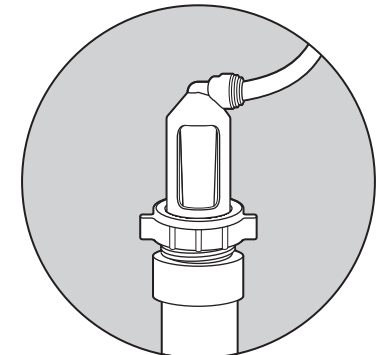
Multipurpose Airgap DRAIN LINE ADAPTER



ASME A112.1.3

Part No.
G-58JP

► For Schedule – 40
Standpipe Installation



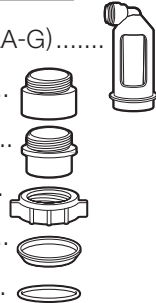
DLA-G™

Installation Procedures

For Standpipe Applications

LIST OF PARTS ENCLOSED

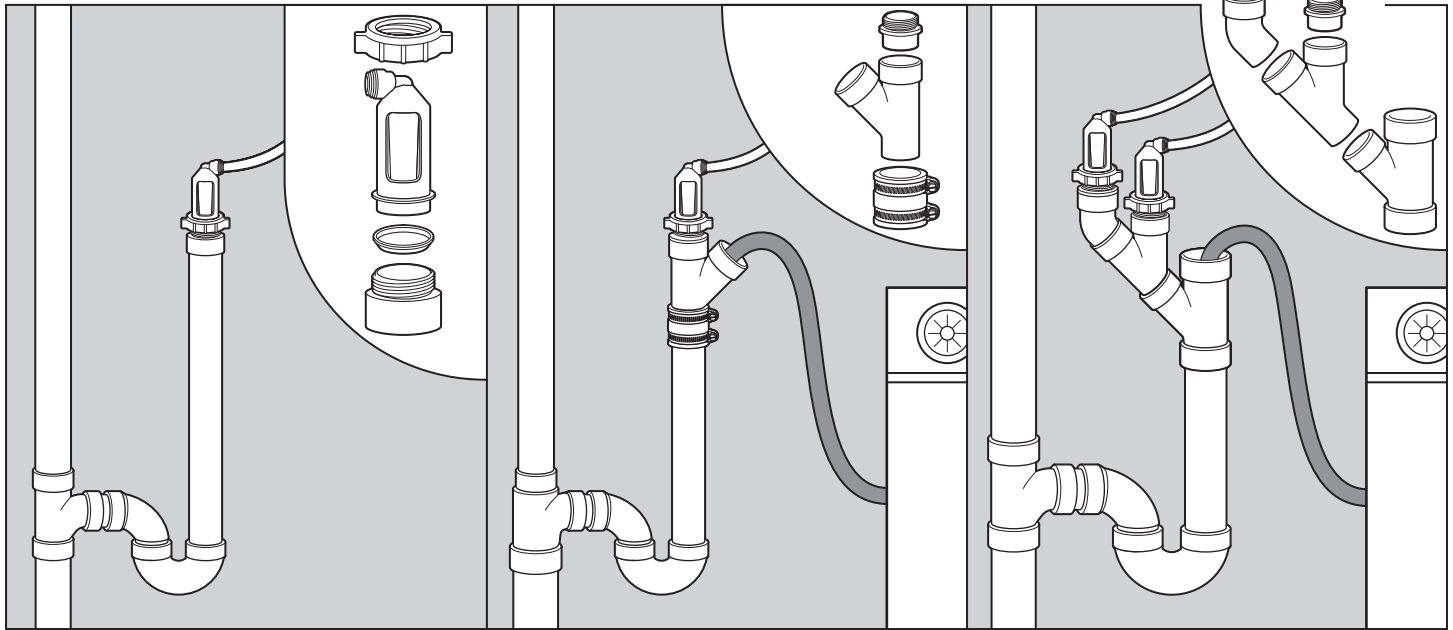
- 1 — Drain Line Adapter **Airgap** with Push-In, Compression or Barb Connection (DLA-G)
- 1 — 1 1/2" Schedule-40 (Hub x Male Pipe Thread) PVC Trap Adapter.....
- 1 — 1 1/2" Schedule-40 (Spigot x Male Pipe Thread) PVC Trap Adapter.....
- 1 — 1 1/2" Slip Joint (S.J.) Wing Nut.....
- 1 — 1 1/2" Slip Joint (S.J.) Beveled Washer
- 1 — 1 1/2" Nitrile O-Ring (for alternate use instead of washer).....



- *The DLA-G provides a true airgap for all Schedule-40 DWV standpipes.*
- *These instructions are intended for the professional installer. Examples are given without providing details of every procedure.*

To comply with all plumbing code requirements, the standpipe used with a DLA-G must be trapped, vented and fabricated from a Schedule-40 Drain Waste and Vent material that has been approved in your area, such as: ABS, PVC, galvanized steel, copper or no-hub cast iron with an inside diameter of 1 1/2" or greater.

Below are three practical standpipe configurations:



Combination residential water softener / RO / washing machine drain configurations

The examples below:

