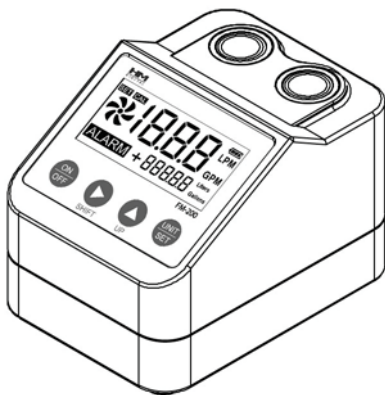


# USER'S GUIDE

## FLM-3 FLOW MONITOR



**PROFESSIONAL WATER  
TESTING INSTRUMENTS**

## FEATURES OF THE FLM-3

### AUTO LCD ON/OFF

The LCD display will turn off on the unit automatically after 5 minutes. However, the unit will continue to take flow rate measurements even while the display is off.

### ALARM MUTE

▶ How to shut off the alarm temporarily:

Turn the power on and press and hold the "ON/OFF" button for 3 seconds, the display will show OFF. The alarm is now shut off and will not sound even if the flow rate exceeds the alarm value.

▶ How to turn on the alarm:

Whenever you turn off the unit and turn it back on again, the alarm will automatically be turned back on.

### CHANGING THE BATTERIES

When battery life display on the FLM-3 begins to blink and the unit starts to beep, this will indicate that it's time to replace the batteries.

Open the bottom cover of the device, removed the batteries and insert new batteries while matching proper positioning. The battery type for the device is two 1.5V AA Alkaline batteries.

**\*\*Caution:** Do not mix and use batteries of different brands. If the device will not be used for long periods of time, please remove batteries and store the device.\*\*

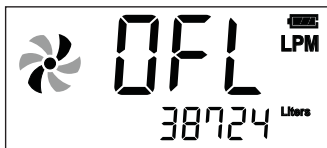
## HOW TO USE THE FLM-3

1. Insert the 1/4" hose into to the fitting on unit.
2. Remove the battery discharge protection tab which is located on the bottom of the unit in order to turn the power on.
3. Press the "SET" button and hold for 3 seconds in order to select the preferred unit of measurement (LPM or GPM).
4. Press the "SET" button and set the desired alarm value by pressing the "SHIFT" and "UP" buttons.
5. Press the "SET" button in order to save the desired alarm value.
6. The counter on the LCD display will begin to change numbers as water flows indicating that the unit is in operation.

## RESETTING THE CUMULATED FLOW RATE

1. Power on the unit.
2. Press the "UP" and "UNIT/SET" buttons simultaneously and hold for 3 seconds.
3. You will hear two short beeps, indicating that the number has been reset to 0.

## OUT OF MEASURABLE RANGE



If the flow rate goes out of measurable range, (as in the diagram above), "OFL" will appear on the display screen.



If the cumulated flow rate goes out of measurable range, (as in the diagram above), "OFL" will appear on the bottom of the display screen.

## FEATURES

The FM-200 is an easy-to-install flow monitor that enables you to check and measure flow rates in Liters Per Minute (LPM) or Gallons Per Minute (GPM).

This product enables users to manage clean water when a water purifier filter expiration date is set to match the flow rate capacity. A user can set a specific flow rate limit, and if the flow rate exceeds the set limit, an alarm will sound along with an icon that will appear on the display screen.

## SPECIFICATIONS

**Range:** 0-99999 Liters / 0-99999 Gallons

0.8-8.0 LPM / 0.2-2.1 GPM

**Resolution:** 1 Liter (1 Gallon); 0.1 LPM (0.1 GPM)

**Sensor Housing Material:** POM (KEPITAL, F20-03-KEP)

**Accuracy:** +/- 10%

**Fitting:** 1/4" ONE-TOUCH Type

**Alarm:** Sound over set point

**Auto Shut-Off:** After 5 minutes (LCD Display)

**Battery Life:** Approximately 2 Years

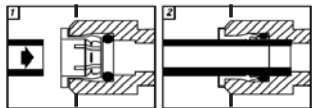
**Battery Type:** 1.5V x 2 EA (AA SIZE)

**Dimensions:** 66 x 90 x 63 mm (2.6 x 3.54 x 2.48 inches)

**Weight:** 7.3 oz (Includes Batteries)

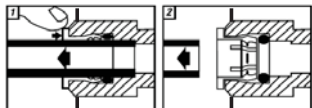
## INSTALLATION INSTRUCTIONS CONT'D

How to Insert the Hose:



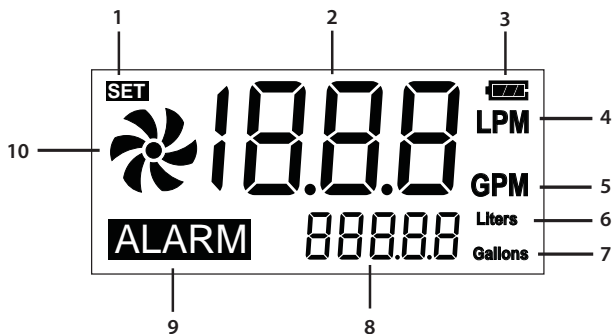
Insert the hose towards the direction where the arrow points to install.

How to Remove the Hose:



While pressing the grey ring, pull the hose towards the direction where the arrow points to separate the hose.

## LCD SCREEN DESCRIPTION



- |                           |   |
|---------------------------|---|
| 1. "SET" Mode icon        | 6. Liters icon (for liters mode)                    |
| 2. Volume per minute      | 7. Gallons icon (for gallons mode)                  |
| 3. Battery life indicator | 8. Stacked volume used                              |
| 4. LPM icon (liters/min)  | 9. Alarm icon                                       |
| 5. GPM icon (gallons/min) | 10. Counting indicator<br>(shows sensor is working) |

## BUTTON EXPLANATION



Power "ON/OFF".



SHIFT

Move the shift button to the right in order to choose digits when setting an alarm.



UP

Increases the number of the selected digit when setting an alarm. Press and hold to speed up.



Accesses the flow rate, "SET" mode, entry and save features.



Press and hold for 3 seconds or order to switch measurement units from liters to gallons and vice versa.



UP

+



Press both buttons while in normal mode at the same time and hold for 3 seconds in order to reset cumulated flow rates.



UP

+



Press and hold both buttons for 3 seconds while in "SET" mode, in order for cumulated alarm value to be reset.

## INSTALLATION INSTRUCTIONS

There are two 1/4" connection fittings on the unit. The left side fitting is an entrance for water and the right side fitting is an exit.



## ALARM SETTING FEATURE

If the cumulated flow rate exceeds the limit that the user originally set, the water flow alarm will beep 5 times and the alarm icon on the LCD display will blink. In this case, change your water purifier filter and reset the unit.

### HOW TO SET THE ALARM

1. Power on the unit.
2. Press the "UNIT/SET" button and hold for 3 seconds in order to choose between Liters or Gallons.
3. Press the "UNIT/SET" button and the word *SET* will then appear on the LCD display. The first digit of the stacked volume used number will then begin to blink.
4. Press the "SHIFT" button in order to move the cursor between digits and press the "UP" button to set the desired number.
5. Press the "SET" button again to save the desired number. You will hear a beeping sound indicating that the desired number has been saved.



### RESETTING AN ALARM VALUE

1. Power on the unit
2. Press "UNIT/SET" button and the word SET will then appear on the LCD display.
3. Press the "UP" and "UNIT/SET" buttons simultaneously and hold for 3 seconds to reset the stacked volume used to 00000.
4. Press the "SET" button once again to save. You will hear a beeping sound.

## ONE YEAR LIMITED WARRANTY

The Flow Monitor ("FLM-3"), manufactured by HM Digital, Inc. ("the Company") is warranted to the purchaser against defective materials and workmanship for one (1) year from the date of purchase.

**What is covered:** Repair parts and labor, or replacement at the Company's option. Transportation charges for repaired or new product to be returned to the purchaser.

**What is not covered:** Transportation charges for the defective product to be sent to the Company. Any consequential damages, incidental damages, or incidental expenses, including damages to property. This includes damages from abuse or improper maintenance such as tampering, wear and tear, water damage, or any other physical damage. The warranty does not cover water damage to the FLM-3 due to parts not securely closed. Products with any evidence of such damage will not be repaired or replaced.

**How to obtain warranty performance:** Attach to the product your name, address, description of problem, phone number, and proof of date of purchase, package and return to:

HM Digital, Inc.  
ATTN: Returns  
5819 Uplander Way  
Culver City, CA 90230  
U.S.A.

**Implied Warranties:** Any implied warranties, including implied warranties of merchantability and fitness for a particular purpose, are limited in duration to five years from date of purchase. Some states do not allow limitations on how long an implied warranty lasts, so the above limitation may not apply to you. To the extent any provision of this warranty is prohibited by federal and state law and cannot be preempted, it shall not be applicable. This warranty gives you specific legal rights, and you may also have other rights, which vary from state to state.

**NOTE:** Warranties are product-specific. Third-party products and products deemed by HM Digital as "accessories" are not covered under warranty. Third-party products include, but are not limited to, batteries and fittings. Accessories include, but are not limited to batteries, lanyards and cases.